

Product:

Lip Seal MPF - Automotive Water Pump Seal

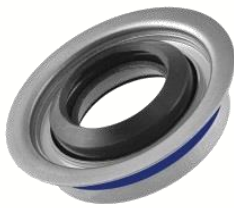
The Lip Seal MPF (*Mechanical Press Fit*) for automotive water pump applications is a modular high quality design available for standard automotive water pump shaft and bore dimensions. Due to its excellent field performance, easy to install and low friction features it is well recognized in the market.

Operation conditions:

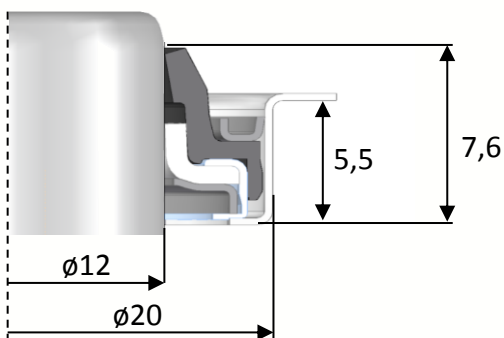
Item	Range	Unit
Medium	Coolant / water solution	[-]
Coolant Mixture	40 - 60	%
Pressure - nominal	0 till 0,2	MPa.g
Pressure – peak	-0,1 till 0,3	MPa.g
Temperature - nominal	-20 till +110	°C
Temperature - peak	-40 till +140	°C
Speed - nominal	0 - 7.000	Min ⁻¹
Speed – peak	10.000	Min ⁻¹
Elastomer materials	HNBR / PTFE	[-]

Assembly dimensions:

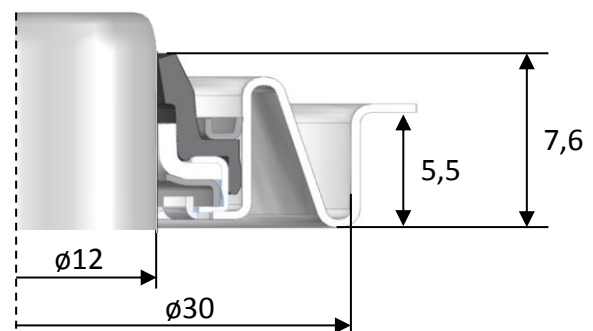
Item	Range	Unit
Shaft diameter	12	mm
Shaft roughness	0,1 -0,6	µmRa
Shaft hardness	>50	HRC
Bore diameter	20 /30	mm
Bore roughness	≤1,6	µmRa
Total height	7,6	mm
Mounting depth	5,5	mm



LS-MPF 1220



LS-MPF 1230



All technical specifications are based on extensive tests and our many years of experience. The diversity of possible applications, however, means that they can serve only as guide values. We must be notified of the exact conditions of application before we can provide any guarantee for a specific case. This is subject to change.

Developing small things that make a big difference.